

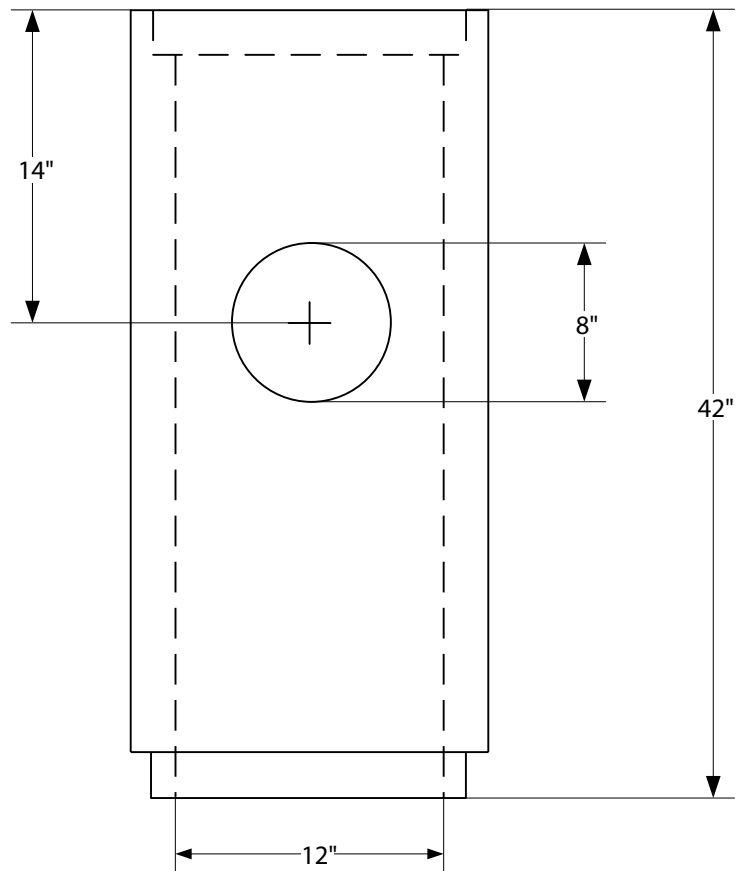
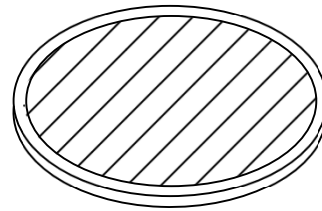


Area Drains

12" Type 45 Area Drain Tongue & Groove

Item Details

- Catch basin designed for small grass areas or residential driveways
- Open bottom to be placed on twelve inches(12") of washed rock
- Concrete pour to form floor in catch basin is available
- 335 lbs
- Tile Grate



Note: Drawings not to scale

www.shopeconcrete.com

1-800-422-7560 [TOLL FREE]



Shope Concrete, LLC
1618 East Main Avenue
Puyallup, WA 98372-3142

(253) 848-1551
Fax Line 1 (253) 845-0292
Fax Line 2 (253) 864-6172

